



MONTHLY MEMBERSHIP PROGRESS REPORT

District 11 A2

Results as of: 5/31/2016

GMT: THOMAS MATNEY

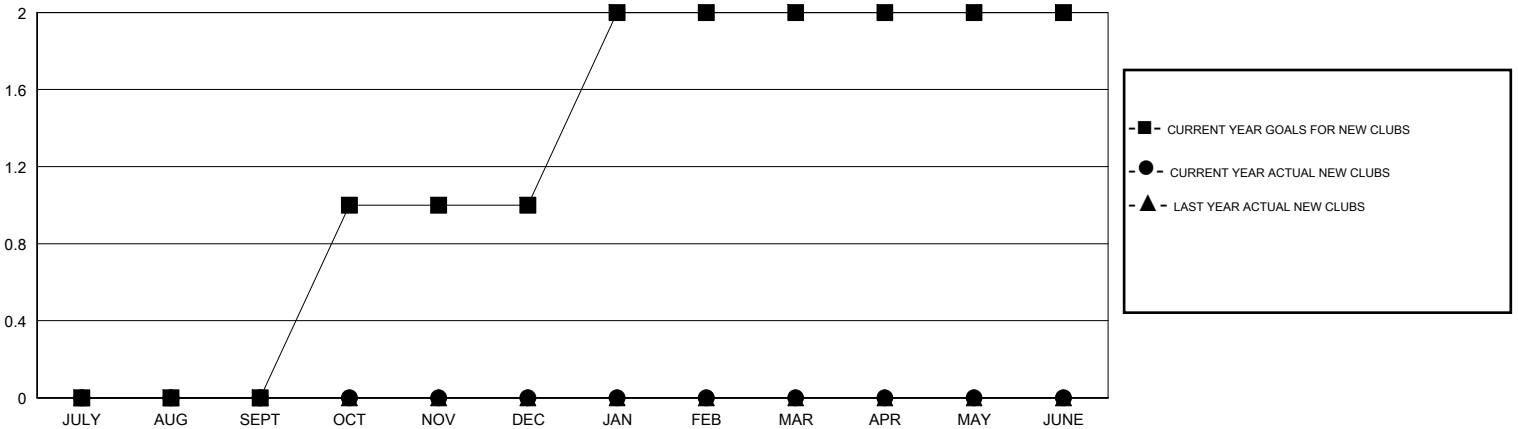
LOCATION MICHIGAN

GMT CA 1

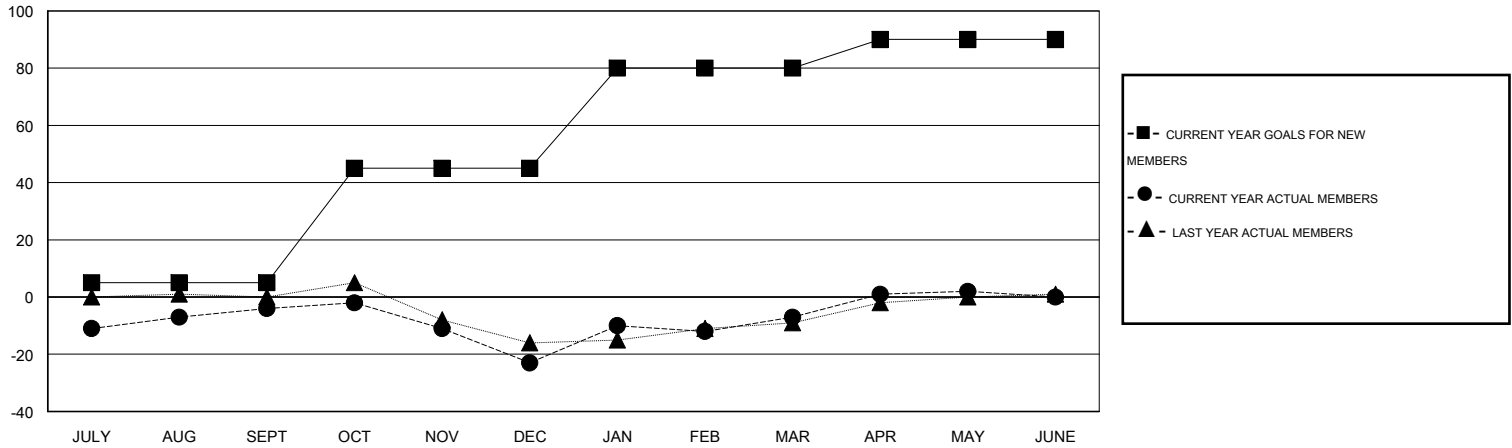
Clubs				
RESULTS FOR 2015-2016				
QUARTER	NEW CLUB GOAL	NEW CLUBS	DROPPED CLUBS	NET GAIN/LOSS
JULY/AUG/SEPT	0	0	0	0
OCT/NOV/DEC	1	0	0	0
JAN/FEB/MAR	1	0	0	0
APR/MAY/JUNE	0	0	0	0

Members				
RESULTS FOR 2015-2016				
QUARTER	NEW MEMBER GOAL	CHARTER AND NEW MEMBERS ADDED	DROPPED MEMBERS	NET GAIN/LOSS
JULY/AUG/SEPT	5	31	35	-4
OCT/NOV/DEC	40	28	47	-19
JAN/FEB/MAR	35	38	22	16
APR/MAY/JUNE	10	28	19	9

GOALS AND ACTUAL NEW CLUBS CUMULATIVE



GOALS AND ACTUAL MEMBERS CUMULATIVE



DROPPED CLUBS: 0	31 CLUBS OF 42 ADDED 1 OR MORE NEW MEMBERS	GENDER DISTRIBUTION MALE 1,070 (72.64%) FEMALE 403 (27.36%)
DROPPED MEMBERS DECEASED 19 CLUB CANCELLED 0 OTHER 104 TOTAL 123	CLICK HERE FOR HEALTH ASSESSMENT DATA	FAMILY UNIT MEMBERS 240 HEAD OF HOUSEHOLD 117 NON-HEAD OF HOUSEHOLD 123